



HEADLIGHT TESTERS



# Automatic Headlight Tester

## VH-1000



## Product Features

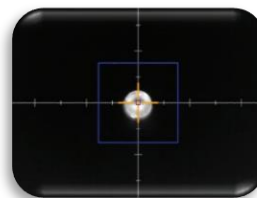
Fully digital computerized controlled CMOS Head-light Beam Tester, with fully automated vertical and horizontal movements, with automated searching of the hotspot of the beam. VISKOR VH-400 Headlight Tester is applied as an automatic measuring device for inspecting automobile headlamps. Its testing ability covers high beam luminous intensity, high beam offset; low beam offset; headlamp benchmark center height etc. These features are standard and allow for quick and reliable headlamp testing. "Measure by image processing with CMOS camera. Measure the light intensity and optical axis of the headlamp at a distance of 1m. Measure the headlights of all vehicles such as cars, buses, trucks and motorcycles.

- Auto tracking image processing
- Dual cameras
- Half-mirror type(structure without distortion)
- High resolution (5 mega pixels)
- Available Modern headlamp HID, LED and Z-beam
- Low beam
- Support for various inputs and outputs (joystick, safety sensor, HDMI output)
- TCP/IP supports sending image
- Precisely using image zoom function
- Warning light and alarm
- Emergency stop switch
- User friendly PC interface
- LAN communication(optional)
- Auto height measurement module(optional)

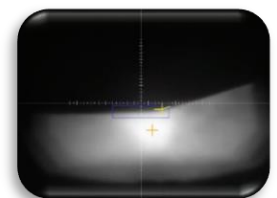
## Technical Specifications

Description	Automatic Headlight Tester
<b>Model</b>	<b>VH-1000</b>
Measuring method	CMOS camera (concentration method)
Measuring range	Low beam, High beam
Light intensity	0-120,000 cd
Measurement range up	0-350mm/10m(0-2°)
Measurement range down	0-525mm/10m(0-3°)
Measurement range left	0-525mm/10m(0-3°)
Measurement range right	0-525mm/10m(0-3°)
Measurement height	400-1400 mm
Measurement distance	1 m
Camera pixel	5 mega pixels
Tracking	Automatic tracking
Display	1280x960 TFT LCD panel
Communication	RS232, TCP/IP
Dimensions	600(W) x 550(L) x 1,700(H) mm
Weight	100kg
Options	LAN communication, Auto height measurement module

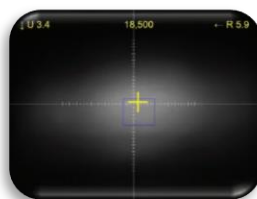
Technical specifications are subject to changes without notice.



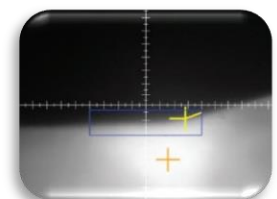
Front screen



Low beam



High beam



Low beam zoom



Made in Korea

**VISKOR CO., LTD.**

Address: #617, 1142, BEOMAN-RO, GEUMCHEON-GU, SEOUL, 08595, KOREA

T. +82 2 6959 0634 F. +82 2 6959 0635 E-mail: viskor@viskorea.com [www.viskorea.com](http://www.viskorea.com)

# Digital Headlight Tester

## VH-400



## Technical Specifications

Description	Digital Headlight Tester
<b>Model</b>	<b>VH-400</b>
Measuring method	CMOS camera (concentration method)
Measuring range	Low beam, High beam
Light intensity	0-120,000 cd
Measurement range up	0-350mm/10m(0-2°)
Measurement range down	0-525mm/10m(0-3°)
Measurement range left	0-525mm/10m(0-3°)
Measurement range right	0-525mm/10m(0-3°)
Measurement height	400-1400 mm
Measurement distance	1 m
Camera pixel	5 mega pixels
Tracking	manual tracking
Display	1,200 x 800 TFT LCD panel
Communication	RS232
Dimensions	600(W) x 550(L) x 1,700(H) mm
Weight	35kg
Options	Automatic height measurement module Internal thermal printer(24column) LAN communication Battery

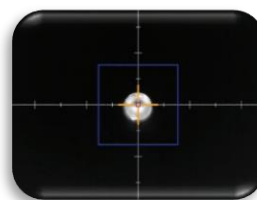
Technical specifications are subject to changes without notice.

## Product Features

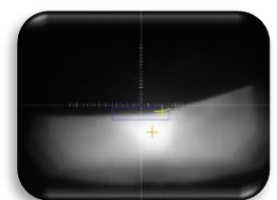
Fully digital computerized controlled CMOS Head-light Beam Tester, with fully automated vertical and horizontal movements, with automated searching of the hotspot of the beam.

VISKOR VH-400 Headlight Tester is applied as an automatic measuring device for inspecting automobile headlamps. Its testing ability covers high beam luminous intensity, high beam offset; low beam offset; headlamp benchmark center height etc. These features are standard and allow for quick and reliable headlamp testing. "Measure by image processing with CMOS camera. Measure the light intensity and optical axis of the headlamp at a distance of 1m. Measure the headlights of all vehicles such as cars, buses, trucks and motorcycles.

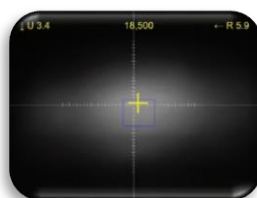
- Analysis by CMOS camera, for the control of new generation of beams: Xenon, Halogen, LED, Laser.
- Easy management by PC program
- Easy height movement with a counterweight
- Intuitive button structure
- Dial quickly and conveniently change settings
- Wide and clear operating screen with TFT LCD
- High resolution (5 Mega Pixel) Dual cameras
- Aiming can be made by viewing the headlamp beam images directly
- State-of-the-art image processing technology enables the measurement of the passing beam (downlights) of the latest headlamp (HID, LED and Z-beam).
- Robust, compact design
- Smooth movement by a slim and stable base



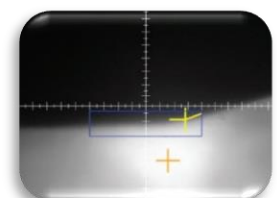
Front screen



Low beam



High beam



Low beam zoom



Made in Korea

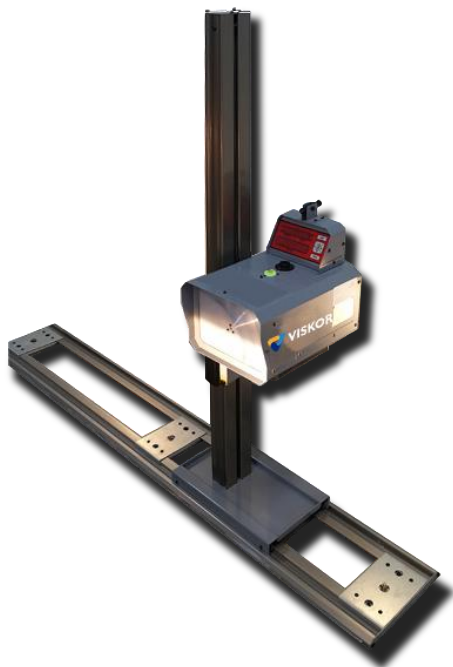
**VISKOR CO., LTD.**

Address: #617, 1142, BEOMAN-RO, GEUMCHEON-GU, SEOUL, 08595, KOREA

T. +82 2 6959 0634 F. +82 2 6959 0635 E-mail: viskor@viskorea.com [www.viskorea.com](http://www.viskorea.com)

## Digital Headlight Tester

### VH-200



### Product Features

VISKOR offers remarkable value with our traditional high quality construction and ability to test modern headlamps(Halogen, HID, LED).

These features are standard and allow for quick and reliable headlamp testing.

Easy to install and use even in a small space with a measurement distance of 1M. It can output the measured data of the inspection vehicle, so it can be used as a customer service dimension. Data of the measured value of the inspection vehicle can be transmitted by connecting to a computer. The test vehicle's measurement data memory function makes it easy to use. It is convenient to use because the measured value is indicated as DIGITAL instead of the analog type. It is quick and easy to operate and adjust up and down. When not in use, it goes into standby mode, and after a while, the power is automatically turned off.

- Measurement both Low beam and High beam
- Connected with PC software and print results
- Quick adjustment
- 1m measurement distance
- Internal recharge battery

### Technical Specifications

Description	Digital Headlight Tester
<b>Model</b>	<b>VH-200</b>
Measuring method	Screen reflection
Measuring range	Low beam, High beam
Light intensity	0-120,000 cd
Measurement range up	0-350 mm/ 10m (0-2°)
Measurement range down	0-350 mm/ 10m (0-2°)
Measurement range left	0-350 mm/ 10m (0-2°)
Measurement range right	0-350 mm/ 10m (0-2°)
Measurement height	40 - 1,000 mm
Measurement distance	1 m
Battery	DC 6V 2A (Internal battery)
Power	AC 80-240V, 50/60Hz,
Display	FND (L/R 4digit, U/D 4digit, BR 8digit)
Dimensions	350 x 360 x 1,600 mm
Dimensions (Rail)	2,700 x 300 x 20 mm
Weight	25kg
Option	Built-in thermal printer

Technical specifications are subject to changes without notice.



Made in Korea

**VISKOR CO., LTD.**

Address: #617, 1142, BEOMAN-RO, GEUMCHEON-GU, SEOUL, 08595, KOREA

T. +82 2 6959 0634 F. +82 2 6959 0635 E-mail: viskor@viskorea.com [www.viskorea.com](http://www.viskorea.com)